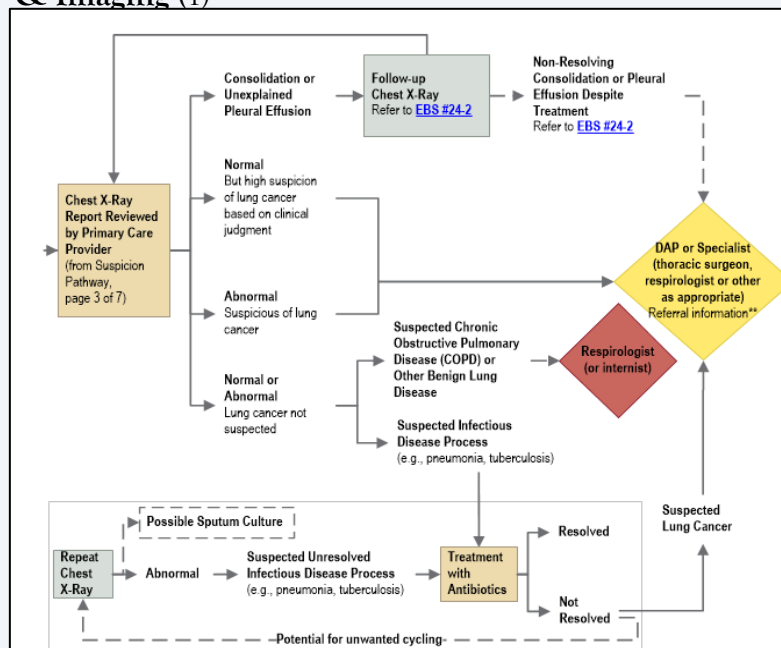


Small Cell Lung Cancer

Intended for use by Clinicians and Health Care Providers involved in the Management or Referral of adult patients with Small Cell Lung Cancer (SCLC)

Section	Activity	Activity Description	Details	Reference(s)
A	Diagnosis	Presentation and Clinical Work-up	<ul style="list-style-type: none"> As per Cancer Care Ontario (CCO) Lung Cancer Diagnosis Pathway Lung Diagnostic Assessment Program (LDAP) to coordinate care during diagnostic work-up and staging <ul style="list-style-type: none"> LDAP Contact Information: <ul style="list-style-type: none"> Tel: (613) 549-6666 x7452 Fax: (613) 546-8225 	CCO Lung Cancer Diagnosis Pathway (1) SERCP Lung DAP Referral Form (2)

Figure 1: Lung Cancer Diagnosis Pathway - Initial Presentation & Imaging (1)



Small Cell Lung Cancer

Section	Activity	Activity Description	Details	Reference(s)
B	Investigations		<ul style="list-style-type: none"> • CT or MRI Head • CT Chest & Upper Abdomen • Bone Scan • PET Scan (not routine in all patients but recommended for potential limited stage disease) • Pulmonary Function Test (PFT) with DLCO 	CCO Lung Cancer Diagnosis Pathway (1)
C	Management	Curative Intent	<ul style="list-style-type: none"> • Limited Disease (AJCC 7th edition stage I-III) • Patients are managed with curative intent unless contraindicated by severe comorbidity <p>Systemic:</p> <ul style="list-style-type: none"> ○ Standard chemotherapy regimen Cisplatin/Etoposide (VP/CP) (CISPETOP(3D)) <p>Radiation:</p> <ul style="list-style-type: none"> ○ Chest (concurrent cycle 1 or 2) <ul style="list-style-type: none"> ▪ 45 Gy in 30 fractions BID OR ▪ 40 Gy in 15 fractions for less fit patients ○ PCI offered to patients with complete or partial 	AJCC 7th edition (3) Cancer Care Ontario SCLC Treatment Pathway (4) Cancer Care Ontario Adjuvant/Curative/

Section	Activity	Activity Description	Details	Reference(s)
			<ul style="list-style-type: none"> • response as 25 Gy in 10 fractions 	Neo-Adjuvant Intent Systemic Therapy (5)
		Palliative Intent	<ul style="list-style-type: none"> • Extensive Disease (AJCC 7th edition stage IV) <p>Systemic:</p> <ul style="list-style-type: none"> ○ Standard chemotherapy regimen VP/CP (CISPETOP(3D)) <p>Radiation:</p> <ul style="list-style-type: none"> ○ Palliative radiation therapy is recommended for patients with intracranial metastases and for patients with significant symptoms related to localized metastatic disease ○ PCI offered to patients with a partial or complete response (20 Gy in 5 fractions) ○ Sequential chest radiation therapy on an individualized basis <p>Palliative Medicine:</p> <ul style="list-style-type: none"> • Early referral recommended 	Cancer Care Ontario Palliative Intent Systemic Therapy (6)
D	Follow-up with no Evidence of		<ul style="list-style-type: none"> • There is no standardized evidence supported follow-up protocol for patients treated with curative OR palliative intent • The following is usual practice for most patients at CCSEO: 	

Small Cell Lung Cancer

Section	Activity	Activity Description	Details	Reference(s)
	Disease		<ul style="list-style-type: none"> ○ Year 1 and 2 clinical assessment with chest x-ray every 8-12 weeks ○ Year 3, 4 & 5 clinical assessment with chest x-ray every 6 months ○ Other investigations ordered as directed by symptoms and clinical findings 	
E	Recurrence		<ul style="list-style-type: none"> ● Second line chemotherapy or re-introduction with first-line chemotherapy considered on an individualized basis ● Palliative Radiation therapy recommended to sites of recurrence/progression with significant localized symptoms ● Early involvement of palliative care services at CCSEO and in the community is encouraged 	
F	Controversies		<ul style="list-style-type: none"> ● Role of PET results in staging and altering management ● Role of PCI in extensive stage disease ● Role of chest radiation therapy in extensive disease 	
G	Clinical Trials		Please refer to the Clinical Trials website for active local studies	Cancer Centre of Southeastern Ontario Clinical Trials (7)

References

1. **Cancer Care Ontario (CCO) Disease Pathway Management.** Lung Cancer Diagnosis Pathway. *Cancer Care Ontario Disease Pathway Management*. [Online] 2012. <https://www.cancercare.on.ca/common/pages/UserFile.aspx?fileId=298429>.
2. **Lung Diagnostic Assessment Program (LDAP) Referral Form.** Cancer Care Ontario (CCO). *Diagnostic Assessment Programs*. [Online] July 2013. <https://www.cancercare.on.ca/common/pages/UserFile.aspx?fileId=290550>.
3. **American Joint Committee on Cancer (AJCC).** Lung Cancer Staging (7th edition). *American Joint Committee on Cancer (AJCC) Cancer Staging*. [Online] 2009. <https://cancerstaging.org/references-tools/quickreferences/Documents/LungMedium.pdf>.
4. **Cancer Care Ontario (CCO) Disease Pathway Management - Treatment.** Small Cell Lung Cancer Treatment Pathway. *Cancer Care Ontario*. [Online] 2014. <https://www.cancercare.on.ca/common/pages/UserFile.aspx?fileId=298427>.
5. **Cancer Care Ontario (CCO) Systemic Treatment Program.** Adjuvant/ Curative/ Neo-Adjuvant Small Cell Lung Cancer Regimens. *Systemic Treatment Funding Model*. [Online] February 2015. <https://www.cancercare.on.ca/common/pages/UserFile.aspx?fileId=300422>.
6. **Cancer Care Ontario (CCO) Systemic Treatment Program - Palliative.** Palliative Small Cell Lung Cancer Regimens. *Systemic Treatment Funding Model*. [Online] February 2015. <https://www.cancercare.on.ca/common/pages/UserFile.aspx?fileId=300424>.
7. **Cancer Centre of Southeastern Ontario.** Oncology Clinical Trials. *Cancer Centre of Southeastern Ontario at the Kingston General Hospital*. [Online] <http://www.kgh.on.ca/en/research/groupsanddepartments/researchgroups/Pages/clinicaltrials.aspx>.

[Back to top](#)

Revisions

- 2015/01/11: Draft created
- 2015/01/21: Discussed at Disease Site Group Chairs Council (2015/01/21)
- 2015/03/06: Revisions to pathology components (Section B – Investigations), addition of high resolution figures (Section A – Diagnosis)